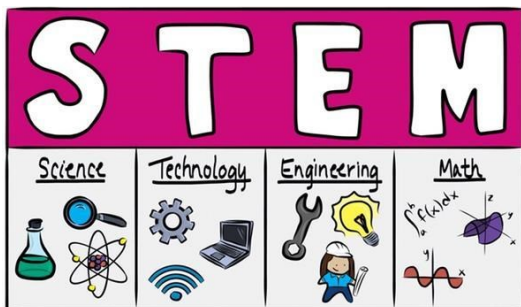




Watton Westfield Infant and Nursery School - Newsletter Friday 25th January 2019

***This half term our Corvus Core Value is:
to actively contribute to the local and wider community***



STEM Day 31st January 2019

Next Thursday, 31st January 2019, we are having a day dedicated to STEM: Science, Engineering, Maths and Technology!

We will be joined by ambassadors from RAF Marham who are bringing Big Build kits to construct with the children. There will also be a rotation of experiments and challenges in the different classrooms for all the children from Reception, Year 1 and Year 2 to explore and discover!

There will be the opportunity for the children to use our new Botley coding robots which have been bought through PTA fundraising.



Children will still need to wear their uniform, but we suggest older items are chosen for that day as they may get mucky doing some of the exciting activities. Thank you.

We are also delighted to have received a £300 Kick Start grant for British Science Week to run an exciting science fair showcasing the children's work. Watch this space for more information.

Diary Dates:

Monday 28th January— Morning Nursery Open Classroom 11.05am, and Afternoon Nursery & Reception Open Classroom 2.45pm

Thursday 31st January—STEM (Science, Technology, Engineering & Maths) Day

w/c Monday 4th February— Children's Mental Health Week 2019

Monday 4th February— KS1 Open Classrooms at 2.45pm

Friday 8th February—Non-Uniform Day for Children's Mental Health Week—Wear What Makes You Feel Good! Suggested £1 donation

Monday 11th February— Morning Nursery Open Classroom 11.05am, Polar Bear class woodland learning session , & Afternoon Nursery & Reception Open Classrooms at 2.45pm (**not Polar Bears**)

Wednesday 13th February—Group visit to Dorrington House

Thursday 14th February—Mid Year Reports home / PTA Valentines Disco

Friday 15th February—Cheetah class bake sale / School closes for half term

Monday 25th February—School reopens & KS1 Open Classrooms

SMILE: We aspire to unlock the full potential of every pupil by Stimulating, Motivating, Inspiring Learning and Enjoyment



Making a lifetime of difference to children in schools.



Children's Mental Health Week 4th to 10th February 2019

This Children's Mental Health Week, we're taking steps to be Healthy: Inside and Out.

Place2Be is encouraging children, young people and adults to look after their bodies and their minds – and we are joining in. It doesn't have to be difficult. Our bodies and minds are connected, so simple things that we do to improve our physical wellbeing can help our mental wellbeing too.

On Friday 8th February we will be holding a non uniform day with the theme of Wear What Makes You Feel Good! This could be comfy clothes, pyjamas or your best party clothes, its up to you! Please ensure all children are dressed appropriately for the weather and have a coat and sensible shoes. We are asking for a suggested donation of £1 which we will split between the Palce2Be charity and wellbeing resources for school. Thank you.

Birds of Dereham—School Uniform

You will be aware that in November we switched school uniform supplier to Tesco after consultation with parents. Unfortunately Tesco have just informed us they are withdrawing their Embroidered Uniform Service from February. We have decided to move our supplier to Birds of Dereham, who also supply Wayland Junior Academy Watton. Uniform will be available from their store on Yaxham Road in Dereham or online at www.birdsofdereham.com. The school and house colours remain unchanged.



BIRDS
OF DEREHAM

Open Classroom Sessions

The next Open Classroom sessions are for Early Years families next Monday, 28th January. The gate will be opened at 2.45pm prompt for Reception parents. Nursery families may be admitted via the main entrance at 11.05am and 2.45pm. Please be on time as we regret there can be no late admittance.

Head Teacher's Awards:

Well done to the following children for receiving an award for excellent work this week:

Filip K, Blake D, Oliver L,
Salissa G, Teja M, Mason B,
Oscar D, Cerys N & Ethan S.

House Points this week:

Eagles: 249

Hawks: 211

Kestrels: 167

Ravens: 289

Attendance

We are aiming for 100% attendance in school. This week's attendance is: 79.42%

Monkeys: 78.4%am
84.44%pm

Pandas: 53.67%

Koalas: 51.69%

Polar Bears: 90.4%

Cheetahs: 98.29%

Meerkats: 87.5%

Elephants: 94.54%

Giraffes: 96.94%

Parrots: 91.19%

Email us at:

office@westfield.norfolk.sch.uk

Visit our Website:

<http://watton.corvuseducation.com>

Telephone:

01953 882669